

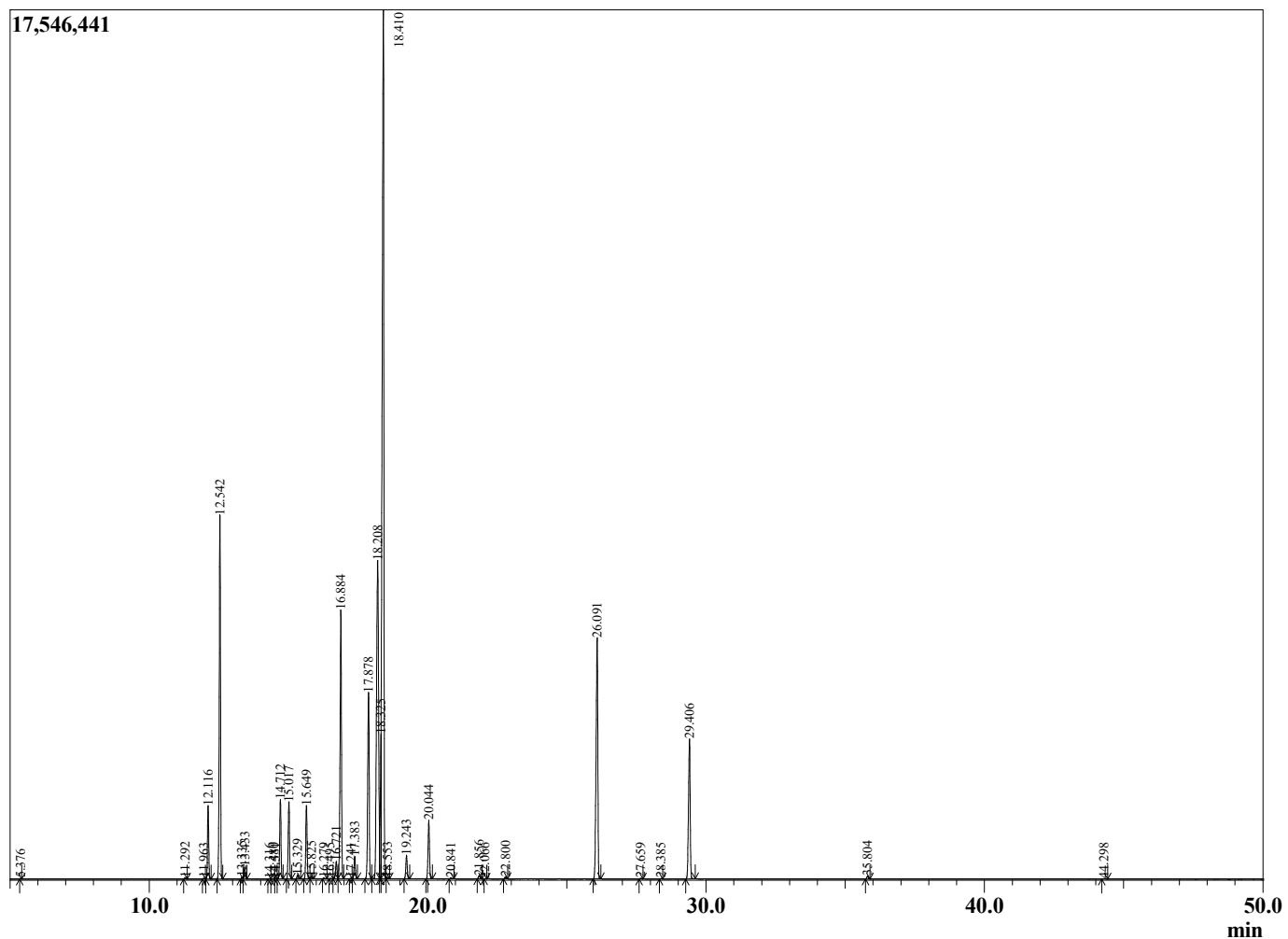
Sample Information

Sample Type : Essential Oil
 Sample Name : Cinnamomum camphora
 Injection : 0.10
 Volume :

Camphor White
 Lot# CHW19-WK
 Country: China



Chromatogram Cinnamomum camphora



R.Time	Name	Area%
5.376	4-Methylpentan-2-one	0.01
11.292	2,6-Dimethyl-4-octene isomer	0.02
11.963	Tricyclene	0.01
12.116	alpha-Thujene	1.89
12.542	alpha-Pinene	9.74
13.335	alpha-Fenchene	0.05
13.433	Camphene	0.31
14.316	Unidentified	0.01
14.480	Unidentified	0.01
14.531	Unidentified	0.01
14.712	Sabinene	2.20
15.017	beta-Pinene	2.20
15.329	6-Methyl hept-5-en-2-one	0.12
15.649	Myrcene	2.07
15.825	6-Methyl hept-5-en-2-ol	0.06
16.279	delta-2-Carene	0.02
16.495	Unidentified	0.01
16.721	alpha-Phellandrene	0.53
16.884	delta-3-Carene	8.04
17.241	1,4-Cineole	0.01
17.383	alpha-Terpinene	0.65
17.878	para-Cymene	5.91
18.208	Limonene	14.23
18.325	beta-Phellandrene	2.14
18.410	1,8-cineole	32.85
18.553	cis-beta-Ocimene	0.03
19.243	trans-beta-Ocimene	0.72
20.044	gamma-Terpinene	1.79
20.841	cis-Linalool oxide (furanoid)	0.03
21.856	Terpinolene	0.10
22.066	Fenchone	0.01
22.800	Linalool	0.06
26.091	Camphor	9.03
27.659	delta-Terpineol	0.02
28.385	Unidentified	0.01
29.406	alpha-Terpineol	4.99
35.804	Safrole	0.09
44.298	Unidentified	0.03
		100.00